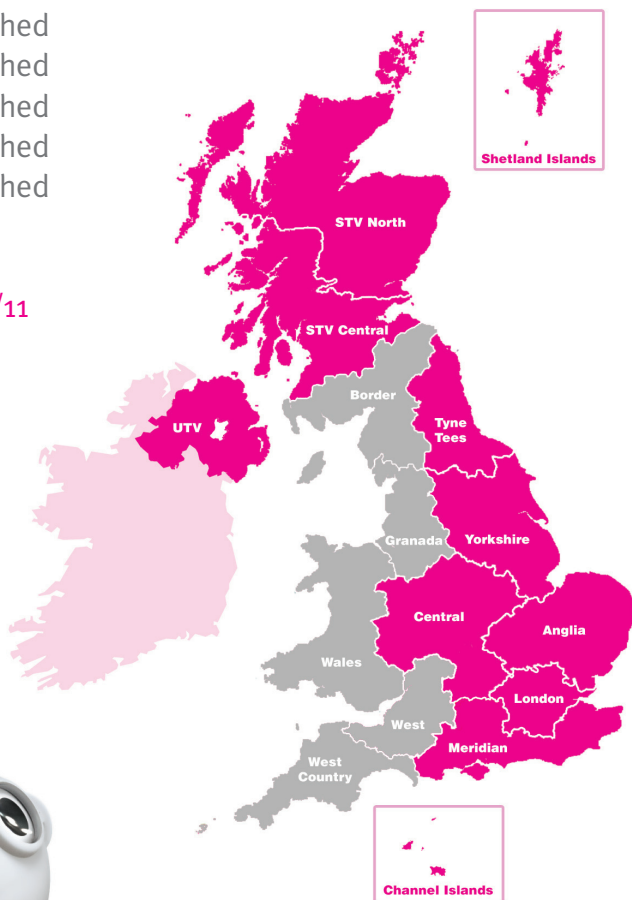


When does switchover happen?

Border	Switched
West Country	Switched
Granada	Switched
Wales	Switched
West	Switched
STV North	2010
Channel Islands	2010
STV Central	2010/11
Central	2011
Yorkshire	2011
Anglia	2011
London	2012
Meridian	2012
Tyne Tees	2012
UTV	2012



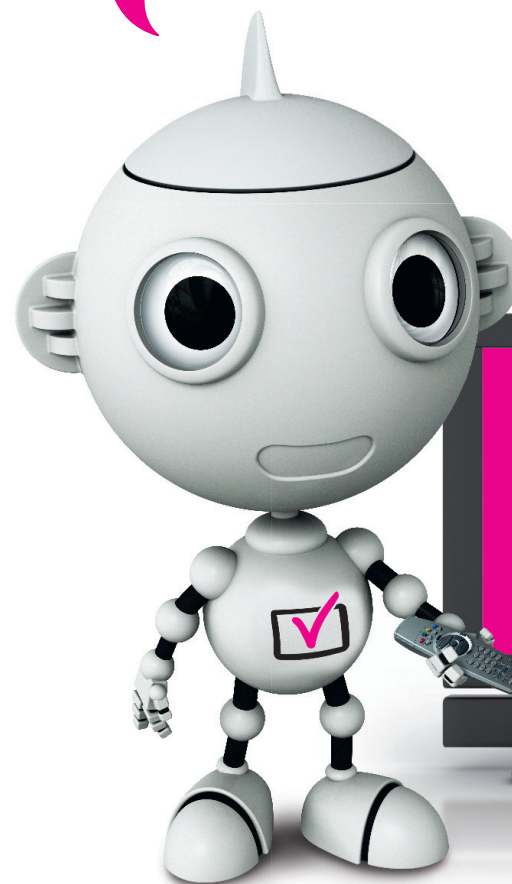
To find out which transmitter group you are likely to receive your TV signal from, visit our postcode checker[†] at digitaluk.co.uk or call us on **08456 50 50**^{*}

get set for digital 

[†]This is a predictive coverage database and should be used as a guide only. ^{*}Calls are free for BT customers within inclusive calling plans. Call charges from other providers may vary. The standard business hours for Digital UK's contact centre are 8am to 7pm Monday to Friday and 10am to 4pm on a Saturday. Opening hours will be extended during switchover in each area. Digital UK, PO Box 26833, Kirkcaldy, KY2 9AG

Important information

Re-tuning your Freeview TV or box



Keep this leaflet and your instruction manual

digitaluk

Providing independent advice.

The digital TV switchover

Television services in the UK are going digital TV region by TV region, ending in 2012. The digital TV switchover is happening so that Freeview services (digital TV through an aerial) can be extended to people who can't currently get them.

Digital UK is the not-for-profit organisation responsible for leading the TV switchover. We're independent, which means that all the advice and information we give is unbiased.

When do I re-tune?

- At each of the two stages of switchover
- If at any time you find you have lost any TV channels
- Regular re-tuning will ensure your equipment is up to date and that it picks up new channels as they become available

To find out when you switch and need to re-tune, visit our postcode checker at digitaluk.co.uk



Any Freeview product, including Freeview HD, needs to be re-tuned.



How do I re-tune my Freeview TV or box?

These instructions are a guide only, as menu instructions will vary. If you have any problems, check your instruction manual or ask a friend or family member to show you how. Alternatively, go to your local electrical retailer, contact your manufacturer or visit digitaluk.co.uk/retuning

Re-tuning only takes a few minutes, just follow the steps below:

- Switch on your Freeview television or box, using your remote control, press **'menu'**
- Select the **'set up'** or **'installation'** option
- Select the **'first time installation'** option (sometimes called **'factory reset'**, **'full re-tune'** or **'default settings'**)
- Press **'OK'** if your equipment asks if you want to delete all your channels. Don't worry, this is normal
- If you are prompted for a code, try **0000** or **1234**
- Channels will be automatically installed. This may take a few minutes and your equipment may shut down and restart
- After re-tuning, you may have to reset your **'favourites'** list